

CAMit II+



CAMit II+

Camera with built in Modem

User's Manual

CAMit II+ Manual revision: 1.0

Date: October 13, 2003

3JTech Co., Ltd.
342 Fu-Hsing N. Rd., 2F
Taipei, Taiwan
Tel: +886-2-2500 6919
e-mail: info@3jtech.com.tw

CAMit II+

Revision History

Revision	Date	Changes
1.0	October 13, 2003	First Release CAMit II+ manual

Congratulations

You just acquired a fine product from 3JTech.

We carefully manufactured our products for you. Each unit is assembled within our own premises with the highest standard of quality.

Our personnel are pleased to provide you with the best-engineered technology.

If, for whatever reason, you are not satisfied and the product is not up to the specifications posted, our products are fully guaranteed.

You are invited to visit our website, <http://www.3jtech.com.tw>, in order to get the latest news about our products as well as free version of the latest software from 3JTech Co. Ltd.

CAMit II+

Table of Content:

Revision History	2
Table of Content:.....	3
1. Product Overview:	5
1.1 Introduction	5
1.2 Features	6
1.3 Package Content	6
2. Physical Description.....	7
2.1 The Front Panel	7
Lens	7
2.2 The Back Panel	8
RS232 Serial Connector.....	8
Phone Line Connector.....	8
Power Supply Connector.....	8
Serial Number / Firmware version	8
2.3 Power Supply Adaptor	9
Power Point Adaptor.....	9
RJ 22 Camera Point.....	9
Trigger In / Out Connector.....	9
Trigger Out	9
Trigger In	9
Ground	9
3. Assembling Camera.....	10
3.1 Mounting Methods	10
3.2 Outdoor Housings.....	10
4. Quick Setup / Installing Your Camera Software	11
4.1 Installing Software	11
4.2 Modem.....	13
4.3 Installing Your Camera.....	13
5 Application Software provided.....	14
5.1 CAMit II+ Setup	15
5.1.1 Setting Parameters.....	15
5.1.2 Primary Settings	16
5.1.2.1 Advance Settings.....	17
5.1.2.2 Adjust Sensor	18
5.1.3 Security Setup	19
5.1.4 View Images	22
5.1.5 Save and Restart the Camera	23

CAMit II+

5.2 CAMit II+ Application Software	24
5.2.1 CAMit II+ Camera Site Menu	24
5.2.1.1 Phonebook List.....	24
5.2.1.2 Site Management	25
5.2.2 Connect to a Site	27
5.2.3 Browsing Camera	28
5.2.3.1 Browsing Window	28
5.2.3.2 Image Information Display.....	29
5.2.3.3 Changing Image Size	29
5.2.3.4 Change Screen Size.....	29
5.2.4 Remotely Setup the Camera	30
5.2.4.1 Primary Setup:.....	30
5.2.4.2 Security Setup	32
5.2.5 Recording Image	35
5.2.5.1 Setup Recording Directory	35
5.2.5.2 Recording	35
5.2.5.3 Call Back Recording	35
5.2.6 Play Recorded Images	36
5.2.6.1 Delete Recorded Images.....	37
5.2.6.2 Save Images into JPG files	37
5.2.7 Modem Configurations	38
5.2.8 External Routine	38
5.2.9 Help	38
6. Frequently Asked Questions:	39
Can I view the same site from different locations?	39
Can I view same site simultaneously from 2 locations?.....	39
Why won't my modem in the camera recognize the dial tone?.....	39
Why won't my external trigger input work?	39
What should I do if I forget my password?.....	39
7. Specifications.....	40

CAMit II+

1. Product Overview:

1.1 Introduction

CAMit II+ is a color camera with a built-in modem. This camera is a complete system by itself, working as a stand-alone viewing center. Further more, with 3JTech's latest development, you will be able to send e-mail to a customized e-mail account when the camera is triggered.

It can be connected at any regular residential telephone line, or analog PBX extension line, to transmit live images via phone line, with the e-mail function; you will know exactly what happened even if you're not at the site. You can dial in the CAMit II+ from any remote location using a computer and a modem to monitor in real time and record images.

CAMit II+ can also be triggered by its built-in motion detection, normal close to open or other external TTL level signal devices. Upon trigger, CAMit II+ will automatically dial out and send images to a remote pre-set computer for recording or dial to an Internet Service Provider and send up to 20 images to your e-mail box.

Together with the built-in real time clock, you will be able to schedule the camera for security mode. Therefore, CAMit II+ will provide you with real 24 hour surveillance system for maximum security.

CAMit II+

1.2 Features

- ✓ Low cost, DIY remote security camera
- ✓ E-mail function
- ✓ NO computer needed at monitored site
- ✓ Point to point, modem to modem, real time remote monitoring
- ✓ Built-In Real Time clock for scheduled security
- ✓ Sensitivity adjustable motion detection, for security purposes
- ✓ Trigger In/Out connector for connecting external sensor for monitoring and security purposes
- ✓ Up to 8 external Trigger In/Out upgradeable
- ✓ Record images onto hard drive of computer, Jpeg format available
- ✓ Password protection
- ✓ Small size and low power consumption
- ✓ Automatic/Manual gamma correction
- ✓ Non aging CMOS image capture device

1.3 Package Content

- 1) 1 CAMit II+ camera
- 2) 1 CD with software (CAMit II Setup & CAMit II AP) and user's manual
- 3) 1 RJ11 telephone line cord
- 4) 1 (120 V, 60 Hz) Power adaptor with Trigger In/Out connectors
- 5) 1 DB9 (RS232) serial connector cable for setup

CAMit II+

2. Physical Description

The following information contains the physical description of CAMit series camera. This includes the functions and the locations of each connector and indicator. The information provides useful reference when installing the product. Please familiarize yourself with CAMit cameras.

2.1 The Front Panel

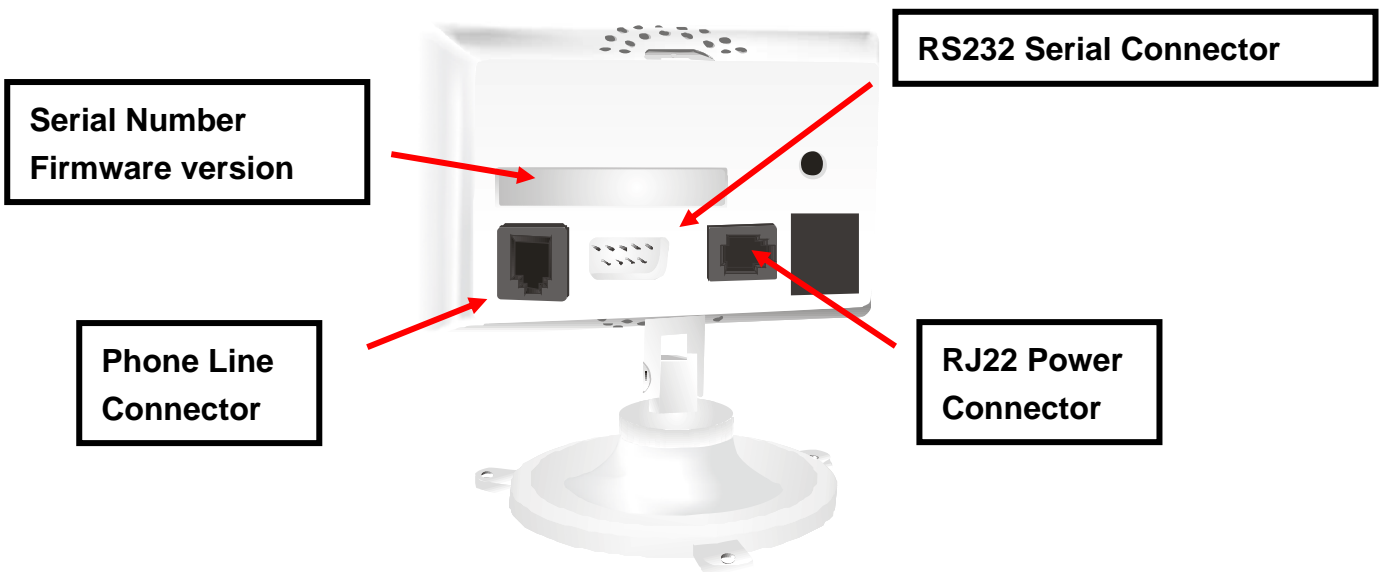


Lens

CAMit II+ box includes a standard 102° wide angle lens fix to the camera. For custom user, other types of lens are also available upon request. Please note that different price may occur with different lenses.

CAMit II+

2.2 The Back Panel



RS232 Serial Connector

This serial connector provides links between the computer and the camera via RS232. This connector is used for the computer to configure the camera. The RS232 serial connector is also used for extension of devices such as external Trigger In/Out, GSM modem etc.

Phone Line Connector

CAMit II+ is designed for connection via phone lines and modems, please plug the phone line here.

Power Supply Connector

CAMit adopts unique RJ22 cable for power supply. The special featured RJ22 cable includes Input / Output (I/O) function. Simply connect the Input / Output cable to desire address and no hardware jumper fixing on camera is required.

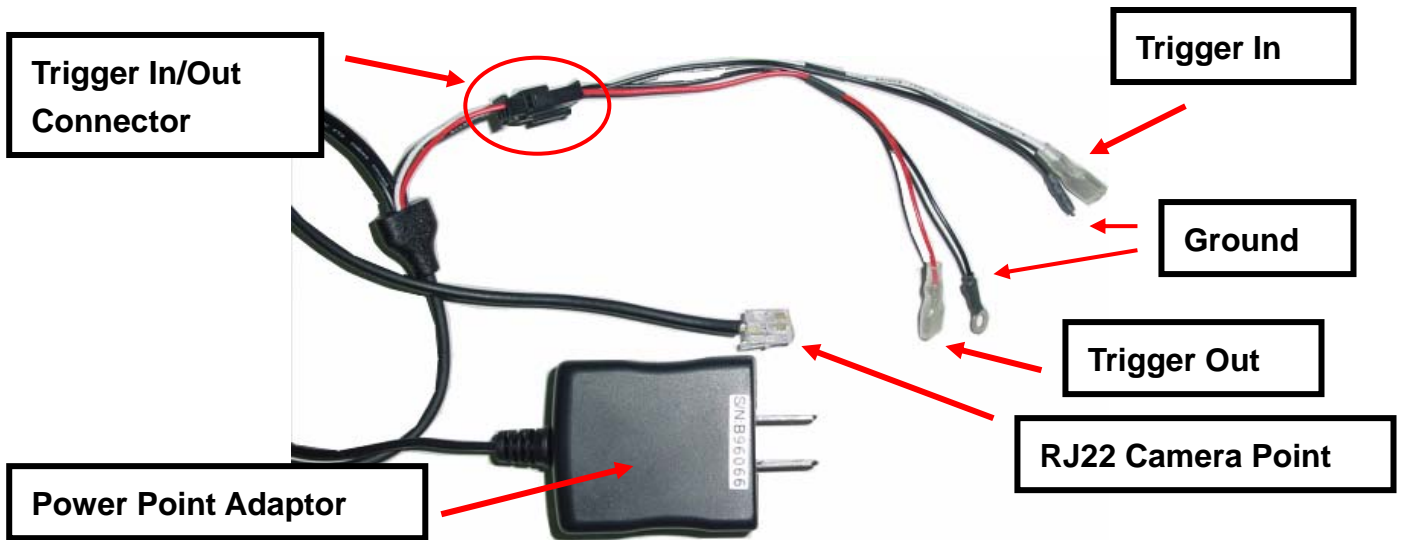
Serial Number / Firmware version

The label sticker includes the serial number and the Firmware version of the camera.

Note. If you have updated the camera firmware version, the firmware version information may no longer be valid.

CAMit II+

2.3 Power Supply Adaptor



Power Point Adaptor

Plug the power point to your local power point. The specifications for the power adaptor are as follows:

Input: 100 – 240Vac ~ 0.3A 50/60Hz

Output: 5.0Vdc / 2.0A

RJ 22 Camera Point

Plug this end to the camera's RJ22 slot.

Trigger In / Out Connector

The Trigger In/Out connector cable is connected to the RJ22 AC power adaptor.

Trigger Out

The Red cable is for Trigger Out and it needs to be connected to TTL level (0 – 5 V) external devices.

Trigger In

The White cable is for Trigger In and it also required to be connected to TTL level (0 – 5 V) external devices.

Ground

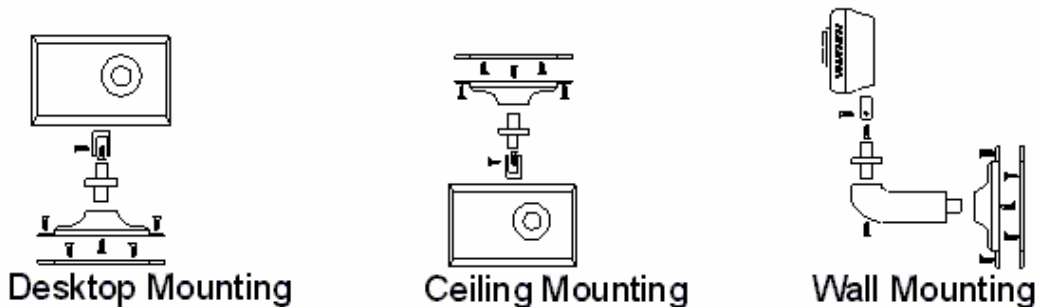
The Ground cable is the black and can be found both on *Trigger In* and *Trigger Out*.

CAMit II+

3. Assembling Camera

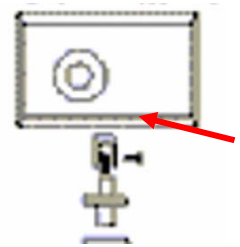
The information provided in this section will assist you in assembling and install the product correctly. It is recommended to configure the camera before positioning the camera.

3.1 Mounting Methods



CAMit II+ come with a desktop mount upon purchase. To position the camera, fasten the camera with screws in the holes at the base of the mount. The default mount configuration is the desktop mount.

In case of ceiling mount, remove the screws attaching the mount to the camera and re-attach the mount to the spare hole on the top of the camera.



Wall mounting leg is optional accessory upon request with additional charge. Please contact your local dealer for more information.

3.2 Outdoor Housings

CAMit II+ cameras are not designed to be outdoor camera. Due to the unexpected exterior environment, extra housing is required if you wish to install CAMit cameras outdoors.

CAMit II+

4. Quick Setup / Installing Your Camera Software

This section will teach you how to setup the camera step by step, including the installation of application software and using the software to configure the camera.

4.1 Installing Software

1. Place the Application CD into your CD-Rom drive.
2. When the Install window show up, select “**Setup CAMit II+ AP**” If the window does not load automatically, please go to my computers and double click on the CD-Rom drive with installation CD or run the setup.exe file under CAMit II+ directory.

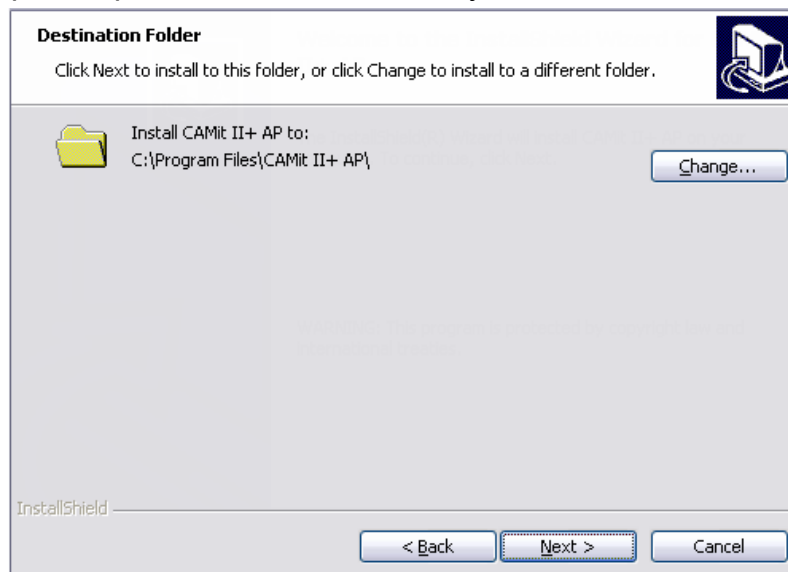


CAMit II+

3. After selecting “Install CAMit II+” the Install Shield Wizard window should appear and take you through installing. Please follow the instructions and press **Next**.



4. The window will then ask you for your user information. Please enter the user information accordingly.
5. Choose Destination Location – If you wish to change the destination folder for CAMit II+ software, please press browse and select your desired folder else press **Next**.



6. Start Copying Files – Please click **Next** to continue or **Back** to go back to Choose Destination Location.
7. Please wait while the program is installing.
8. Click **Finish** when installation is complete.

CAMit II+

4.2 Modem

Before proceeding with a remote CAMit II+ session, your PC should have a modem installed. Please, refer to your operating system to install and configure your modem.

As a reference, usual modem parameters are to be used with CAMit II+. Most common ones are the following:

- 8 bits, no parity, 1 stop bit

- Hardware Flow Control, Clear to Send (CTS)

- Carrier Detect: ON

- Normal DTR Operations

- Auto Answer ON if you wish to received a call dialed by a triggered CAMit II+.

(Please refer to your modem user manual for more information on installing the modem.)

4.3 Installing Your Camera

After you have set up your modem and installed the software we provided. Simply plug the phone line and the power chord to your camera at the location you wish to install. This will initiate the camera, and should be ready for you to dial in!

CAMit II+

5 Application Software provided

Before getting started with the CAMit II+, you should have already installed the software programs (CAMit II+ Setup, CAMit II+ AP and Image Player) and downloaded this user's manual from the CD provided in the package.

The CAMit II+ Setup are used to setup the parameters of the camera. It needs to be connected to the camera using a PC via a serial port. To do so, a DB9 RS232 serial cable is provided from the package.

The CAMit II+ AP is the application software to communicate with the CAMit II+ remotely. Please read this user's manual thoroughly to understand the functions and capabilities of the CAMit II+ camera.

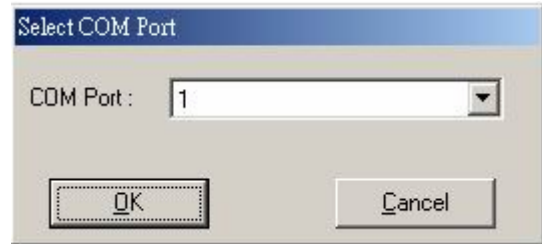
CAMit II+

5.1 CAMit II+ Setup

You will be able to set up your CAMit II+ directly off your computer. Please note that this is not necessary as you will be able to set up all the necessary functions remotely.

First, please connect your CAMit II+ to a PC using the DB9 (RS232) cable included. You may also download new softwares from <http://www.3jtech.com/Downloads.htm> web site.

Start the CAMit II+ Setup Application. After selecting the correct com port with valid connections between PC and CAMit II+, you will be able to begin setting the parameters of CAMit II+.



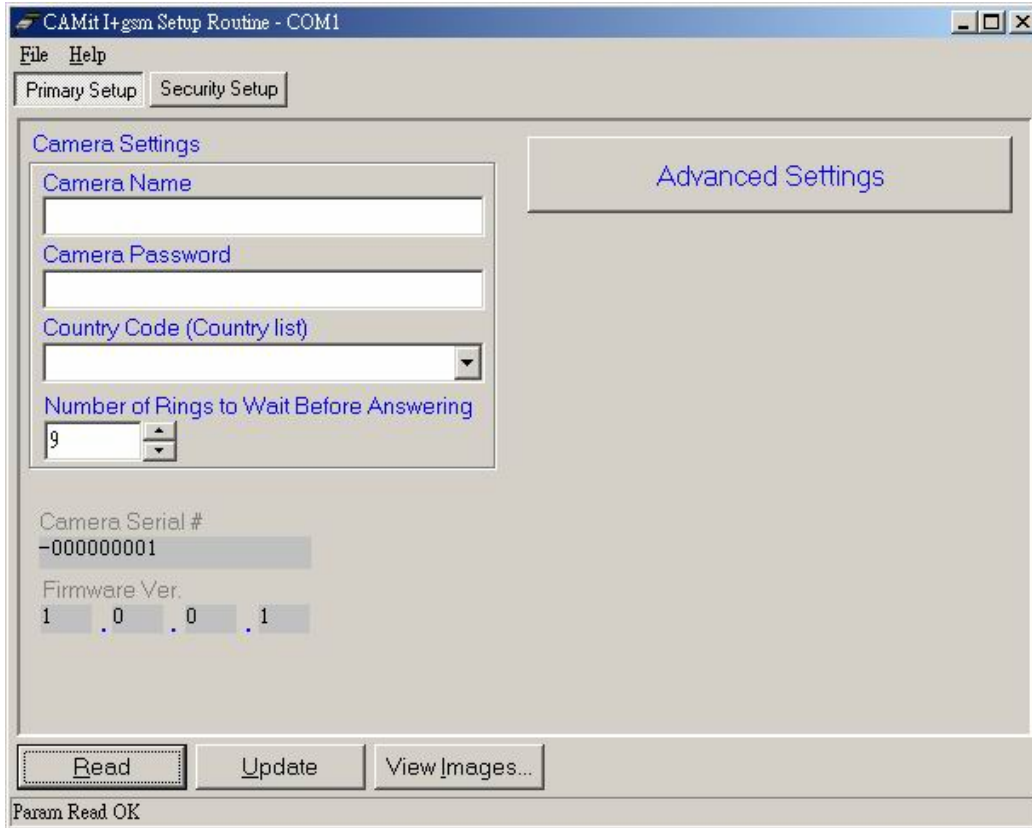
5.1.1 Setting Parameters

You will be able to select 2 different sections for the setup; the **Primary Settings** and the **Security Settings**. You will be able to set up all the necessary parameters which are camera related in the **Camera Setting**. On the other hand, **Security Setting** will allow you to setup the security functions of your CAMit II+ camera.

CAMit II+

5.1.2 Primary Settings

Here are the use and the description for each parameter in Camera Settings.



Camera Name:

Here you will be able to name your Camera Site, which it will display when you establish connection with the camera. Simply enter the desire name you wish for up to 24 characters and numbers.

Camera Password:

You can set the password to your camera. It will protect others from accessing your camera. Simply enter the desire password with any combination of characters and numbers up to 24 characters.

Country Code:

The country code is the section where you will be able to select the country the camera is set. This is used because different country has slightly different dial tone. 3JTech has adjusted the camera to suit each individual environment. Simply select your country from the list.

Number of ring to wait before answering:

CAMit II+

This is where you can set your camera to pick up after certain rings. E.g. If you set it to 3, the camera will pick up the call after 3 ringing tones were detected. To set the number, please enter the number of rings at the text box below.

Camera Serial Number:

This section will display the serial number for the camera.

Camera Firmware Version:

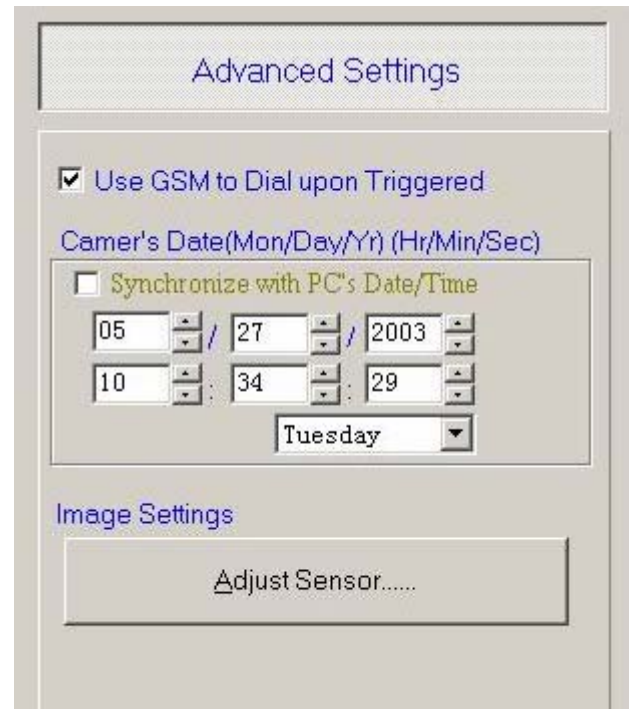
This section will display the firmware version of the camera.

5.1.2.1 Advance Settings

In Advance settings, the parameters are not necessary required for the running of CAMit II+. It is other optional parameters, you may set for your camera.

Use GSM Modem:

You can choose to use an external GSM modem as the method of connection. To enable this function, please check the check box before the description.



Note. You will need to reset the camera to initiate this function. The camera will reset itself after you update the information. Please wait for at least 1 minutes before try and connect to you camera.

Camera's Date:

This section will show you how to set up the real time clock for your camera. The clock in your camera is an individual clock, and is not related to your computer time.

Synchronize with PC's Date/Time:

Enable this function will allow the camera time to be synchronized with the computer. To enable it, please check the check box.

Camera Date (mm/dd/yyyy):

This section will allow you to set the date in the camera. Please insert the date you wish to set to the according text boxes. (Months/Date/Year and Day)

Camera Time (hh:mm:ss):

This section will allow you to set the time in the camera. Insert the time you wish to set

CAMit II+

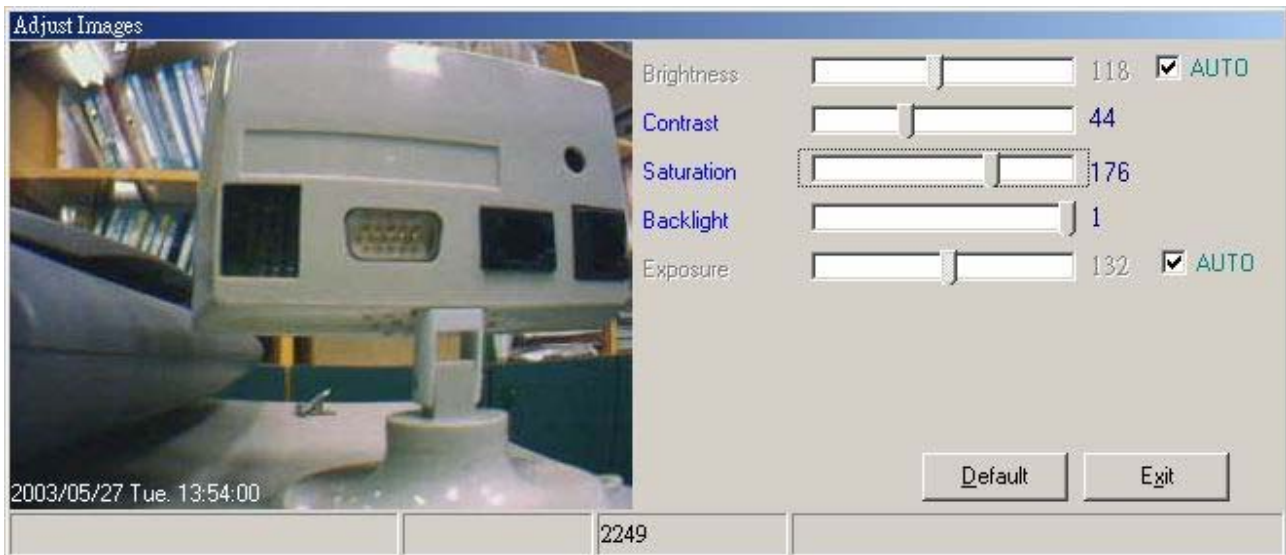
to the corresponding boxes. (Hour/Minutes/Seconds)

Note. Time synchronization will not take effect until you click on **save** button.

5.1.2.2 Adjust Sensor

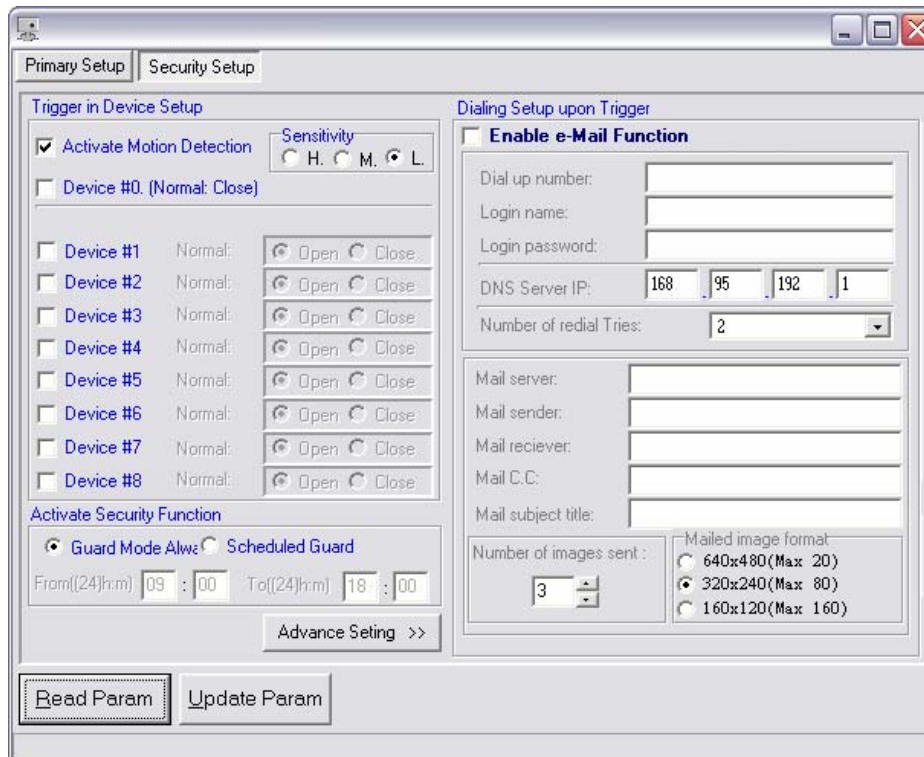
Adjust Images

To adjust the settings of the images please click on **Configure** button. A window should load when click. You will able to adjust the different variables such as brightness, contrast, saturation, sharpness, hue, backlight and exposure of the camera by drag the scroll bar left and right. Click on Auto will allow the camera to do automatic adjustments. Click **Exit** when done.



CAMit II+

5.1.3 Security Setup



The security setup will allow you to setup the motion detection, trigger in and out devices.

Motion Detection

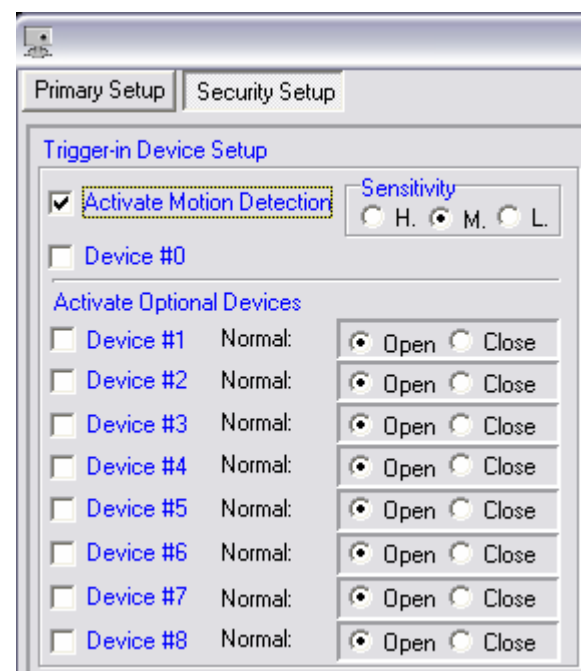
The Motion Detection function is a very valued function of the camera. It allows users to use the camera for security purposes, as the function will send image files to a pre-set computer upon motion detection. The files will also automatically be recorded to the hard drive of the computer for future reference.

To enable the motion detection, please check the box.

Sensibility: You will be able to choose 3 different sensibilities for your Motion Detection, simple choose High, Med, or Low according to your need.

Trigger In

Please check the box to enable Trigger In function. Please note that Device #0 is the default that is connected to the RJ22 power supply. Device #1 - #8 is the optional external device which you can purchase from your local dealers. To enable the optional device, please check the number according to the numbering.



CAMit II+

The Following Functions will only be available when Motion Detection or Trigger In is enabled.

Activate Security Mode

You will be able to choose between 2 types of activating your security mode; **Always** and **Daily**.

Guard Mode Always:

If you chose this option, the camera will always be on security mode when you have enabled either Motion Detection or Trigger In.

Scheduled Guard Mode:

If Scheduled Guard Mode was chosen, the camera will only start its security mode including Motion Detection or Trigger In at the time given. The camera will rely on the internal real time clock for its time reference. To setup the activation time for security, please insert the time at the space provided.

Image Captured

This is where you can set the images to be captured after the camera has been triggered and detects unusual intrusion. Please insert the number of image to be captured at the space provided.

Image Size

You will also be able to select different image size to be captured. Please select between 640x480, 320x240, 160x96.

E-mail Functions

Your camera will do an email sending procedure once it has been triggered. This way, you will be able to grasp the image during the incident which the triggering is occurred. Please click to enable the e-mail function.

Dial up number:

Please insert the number of the ISP for your CAMit II+ to dial when triggered.

Login Name:

Please enter the login name for your account to log into the ISP.

Login Password:

Please insert the password for your account to log into the ISP.

CAMit II+

Number of Tries:

Please set the number of tries for your CAMit II+ to dial to your ISP and try to establish connection.

Mail Server:

Please enter the mail server for your ISP. For example, mail.3jtech.com.tw

Mail Sender:

Please enter the sender (sender's e-mail address). For example info@3jtech.com.tw

Mail Receiver:

Please enter the destination e-mail address here.

Mail C.C:

Please enter a copy for this e-mail when a copy is required to send to other personnel.

Mail Subject Title:

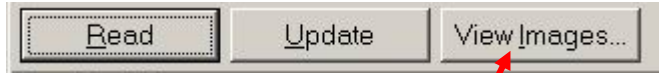
Please enter the title for the e-mail.

Note. Please be aware that some of the ISP may not accept the mail from a different domain or IP region. Therefore you might have to ask your ISP before you setup the e-mailing function.

CAMit II+

5.1.4 View Images

You will be able to view the images when connecting via RS232 to verify the clearness of the image. To browse the image, please click **View Images** button at the bottom of the setup window.



A new window should load upon the click of the button. To start receiving images, please click on **Start** button on right. During the viewing, you will be able to change different screen size. Please select the different image size you wish to view from the right. You can choose from 640x480, 320x240, and 160x120.



To stop receiving images, please click **Stop**. To exit, click **Exit**.

CAMit II+

5.1.5 Save and Restart the Camera

When you are finished setting the camera's parameters, you **must** save the new setting to the camera, else you the new settings will not be saved. To do so, simply click the **save** button after all parameters are set.

Certain functions require you to reset the camera. To reset the camera remotely without turning off the power, simply click **Camera Reset** and chose **OK**. Wait for a few seconds, and the camera should be reset and ready to use again.

CAMit II+

5.2 CAMit II+ Application Software

When the CAMit II+ is connected to a phone line, from a remote PC, you can run the CAMit II+ AP to dial in and connect.

The system will demand you to select the modem. It is this modem that you will be using to dial your camera site. You **must** have a modem selected in order to dial.



5.2.1 CAMit II+ Camera Site Menu

The main menu would then appear.

File Menu

Seq...	Site Name	Tel. No.	Notes
1	Test Site	25161306	

Shortcuts

Phonebook List

Waiting for CAMit to dial in upon Triggered... 05/26/2003 15:46:03

5.2.1.1 Phonebook List

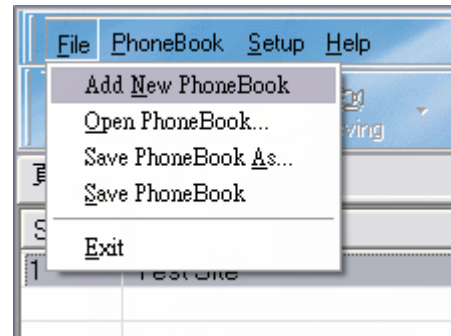
You will be able to save each the site detail to a phone book, this way you will be able to

CAMit II+

distinguish the user, or the category of the sites. Each Phonebook will have its own page and lists of sites. This way, site can be clearly distinguished.

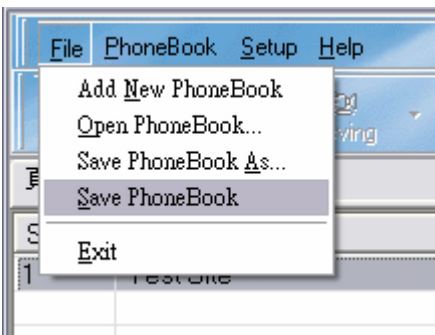
Create New Phonebook:

To create a new phonebook, please select from File → Add New Phonebook. The new phone book will then be created. If you have a phonebook open already, the system will ask you whether to save the old phone book first before creation of the new one.



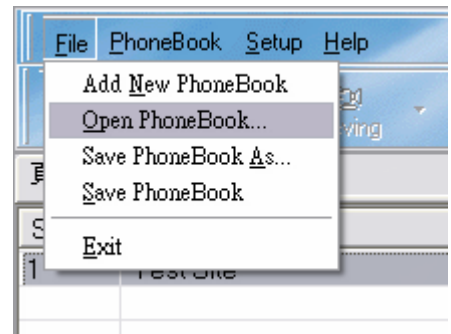
Save Phonebook:

You can save each of the phonebook and open them at later stage. To save the Phonebook, please select File → Save Phonebook. Please give the file a name, and save it. If you have not yet saved the phonebook, the system will ask again before you exit the program.



Open Phonebook:

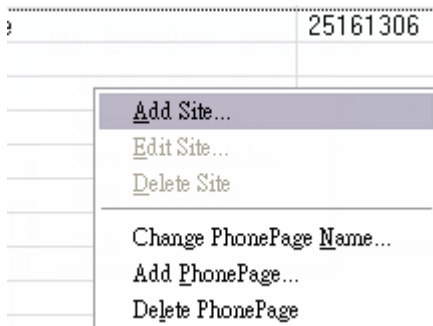
To open a pre-saved phonebook, please select File → Open Phonebook, and select the phone book you wish to open. Click OK when selected.



5.2.1.2 Site Management

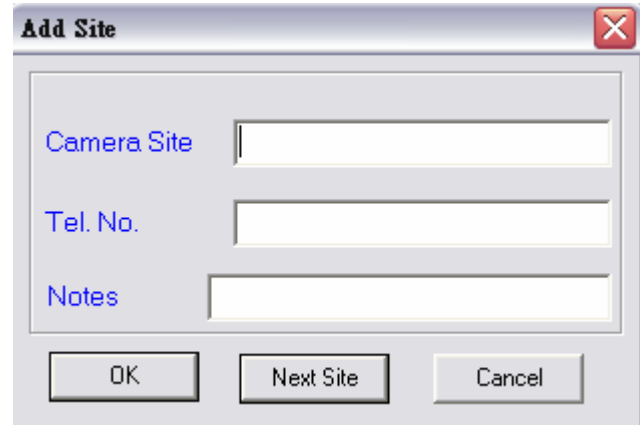
Add New Camera Site:

You will be able to customize your own camera sites. To add a new site to the list, please click on the **Add Site** button at the top of the window or you can right click on the list and select **Add**.

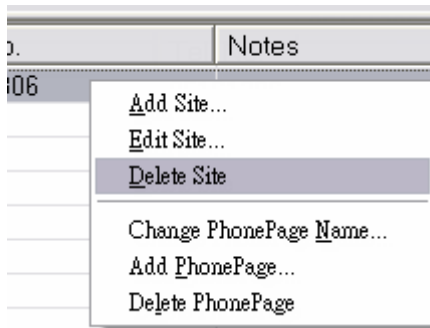


CAMit II+

Upon selection, a sub-menu should appear. Please enter the desired site name and the phone number accordingly. You can also add to the **Notes** section if there are special points have to be made to the camera. When you have multiple sites to add at once, you can click on **Next Site** and you will be able to proceed and continue adding sites. After everything is complete, click **OK** and the new site(s) is added to your list.



Delete Camera Site:



To remove an unused camera site from your list, please select and highlight the camera site you wish to delete, and click the **Del Site** button or right click and select **Delete Site**. After confirmation, the camera site should be removed from the list immediately.



Edit Camera Site:

To edit the camera site on the list, first select and highlight the camera site you wish to edit and click on the **Edit Site** button or right click and choose edit.

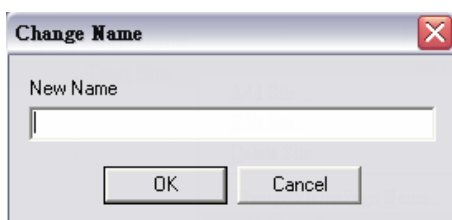
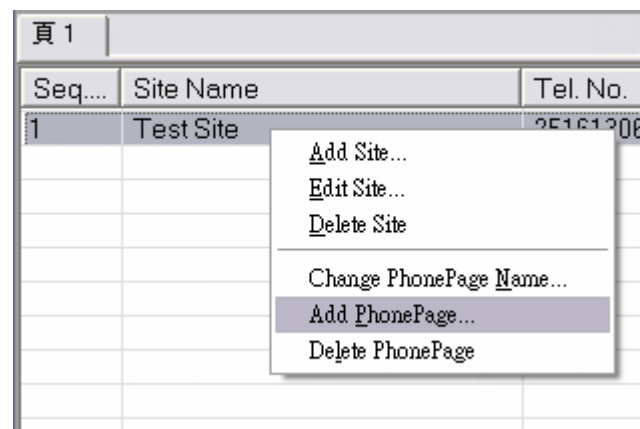


A sub window should appear, enter the new information and click **ok** when done.

Add New Page to Bookmark List:

You will be able to add a new page to categorize you site list. To add a new page for your bookmark, please right click the mouse and select **Add PhonePage**.

The new page should be added immediately.



Change PhonePage Name:

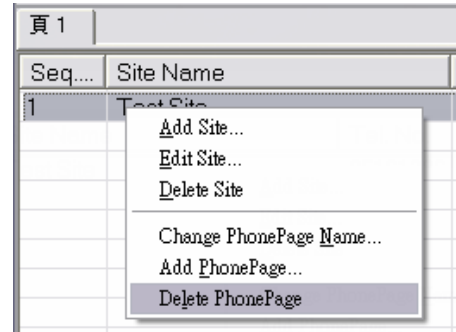
To edit the page name, first select the page you wish to edit. After you're on the page to be edited, please right click and

CAMit II+

select **Change PhonePage Name**. Please insert the new name for the page, and click OK when done.

Delete Page:

Please select the page you wish to delete, and then select **delete page** from the right click menu. After confirmation, the page should be removed.

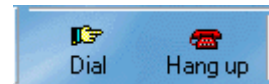


Note. All the sites on the lists will be removed, therefore it is recommended to check all the sites are no longer valid before deleting the page.

5.2.2 Connect to a Site

Dial to a site:

To establish connections with the camera, select and highlight the site listed on the main menu which you wish to dial and click the **Dialing** button at the top of the window. Or you can simply double click on the site, and the program will dial for you.

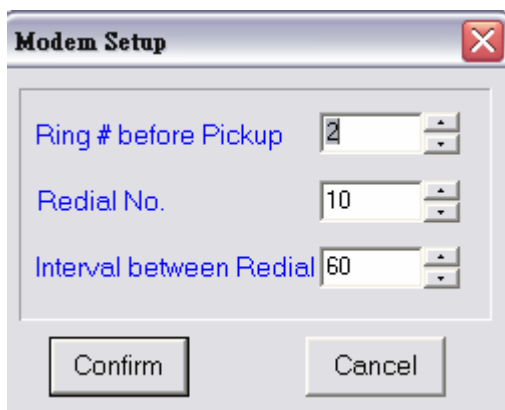
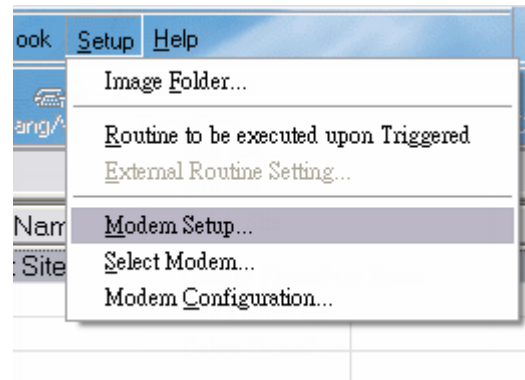


If you have set password for your camera, you will have to type in the password before the system allows you to browse the images.

To setup the dialing on your local computer, please select from File menu **Setup → Modem Setup**. You will be able to set the answering and dialing habit of your camera.

Ring # before Pickup:

Enter a number of rings before your modem will pick the incoming calls.



Redial No.:

This is to set the number of redial tries when you're dialing to a camera.

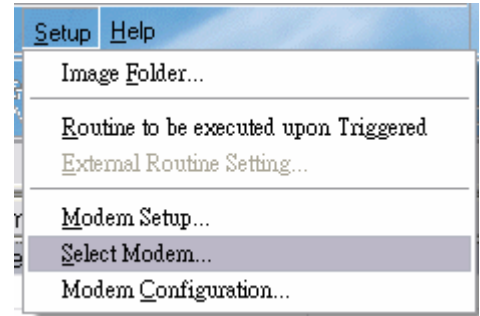
Interval between Redial:

This is the duration which the modem will wait before launches next dial.

CAMit II+

Select a Modem

If you have more than 2 modems installed on your computer, you will be able to decide which one is used to connect to the camera. To select the modem, please select from File menu **Setup** → **Select Modem**. When the page loads, simply select the modem you would like to perform the task and click **OK** when done.



Hang Up:

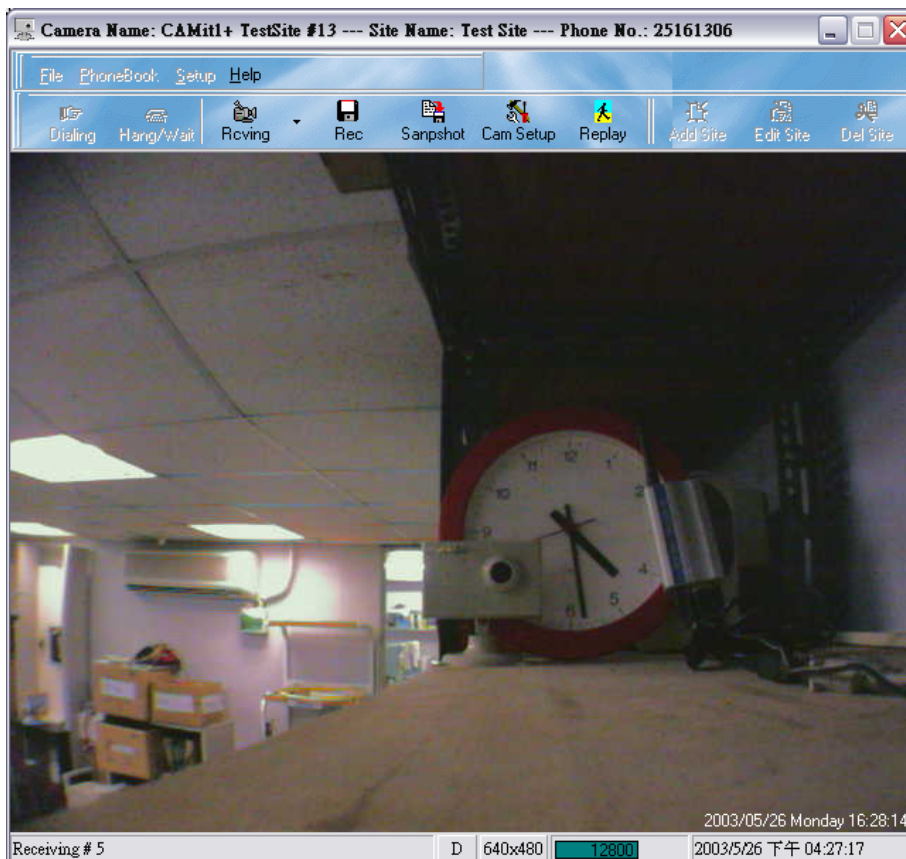
If you have made a call to wrong site, click on the **Hang Up** button at anytime to terminate the dialing.

5.2.3 Browsing Camera

This section will show you how to utilize the browsing window of your camera.

5.2.3.1 Browsing Window

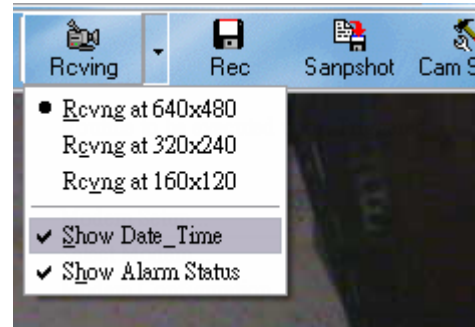
When you have established the connection between your camera and your computer, the images will start loading. The progress bar at the button will show you how your connections have been, and indicate when the image is about to complete.



CAMit II+

5.2.3.2 Image Information Display

The image displayed will have other information such as **Show Date_Time** and **Show Alarm Status**. You will be able to choose whether to display these other information while browsing. To enable/disable them, please click on the **arrow** next to **receive** button, and check or uncheck the information you wish to or not to see.

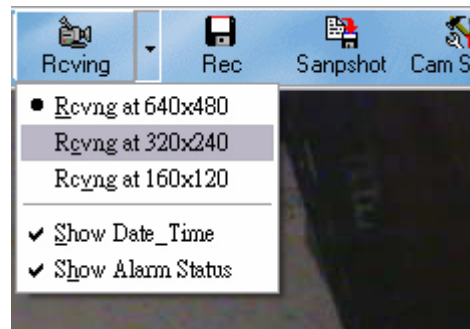


Note. Show Alarm Status will only be displayed when the camera call back from the remote site.

5.2.3.3 Changing Image Size

You will be able to change the capturing size for the camera to suit the network condition. You will be able to select the image size from **640x480, 320x240 and 160x120**.

To change the image size, simply click the **arrow** next to **receive** and select the desire image size.

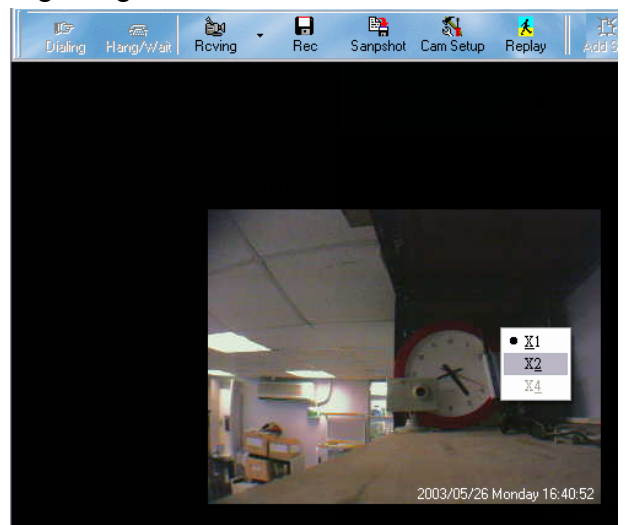


The new image size will be effective on the next coming image.

5.2.3.4 Change Screen Size

When you're browsing at smaller image size such as 320x240, or 160x120, you will be able to blown up the image by software. Simple right click on the browsing window and you will be able to blown up the receiving image size by ratio described.

Please note that the image would be blurry when you blown them up, due to the software generated images. If you wish to obtain a better image, we suggest you change the image size instead of blown up the image.



CAMit II+

5.2.4 Remotely Setup the Camera

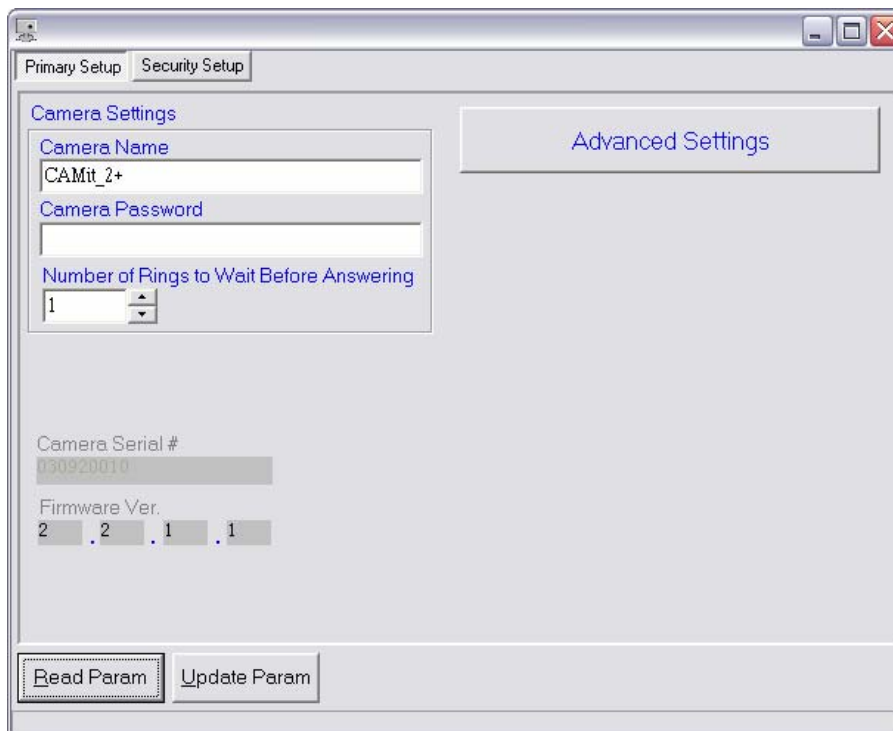
When you establish the connection with your camera, you will be able to remotely setup your camera. Just like over direct connection, you will be able to set the parameters for your CAMit II+.

After your PC has connected onto the camera, the setup function will then be enabled. To initiate the setup page of you camera, simple click on the setup icon on the top of the window.



The setup is divided into 2 main sections; Primary and Security. Primary setup contains all the basic attributes for the camera where as Security has the parameter, enabling the camera to utilize its security functions.

5.2.4.1 Primary Setup:



Camera Name: The Name of the camera site. This information will be useful when you record the images, as it will identify saved images.

Camera Password: You can enter the password here. If you have set the password, you will be required to enter them before you can browse the image. This is a security function to prevent invasion of privacy.

CAMit II+

Number of Rings before Answering: Please enter the number of rings before your camera would respond to your calls.

Advanced Settings

To enable the Advance setting for your camera, please click on the **Advanced Setting** and the advance menu should appear.

Use GSM to Dial upon Triggered:

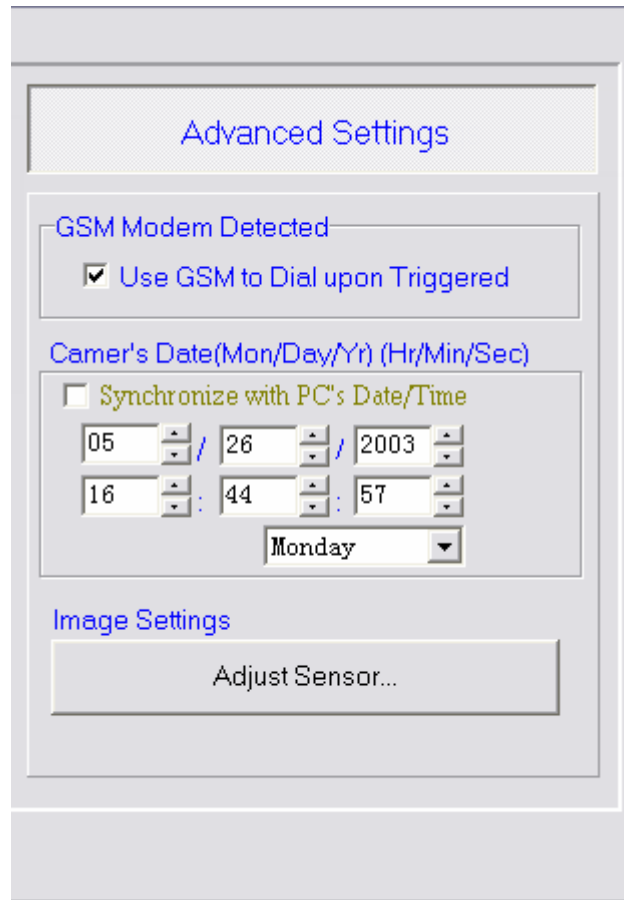
You will be able to enable the GSM modem function by check the box. Please note that the function will only be available when the camera detects the existence of the GSM modem.

Camera's Date:

You will be able to set the camera internal real time. Please insert the time you wish to set the camera to be, or you can check the **synchronize with PC's Date/Time** and the system will update the current computer time when you exit the setup.

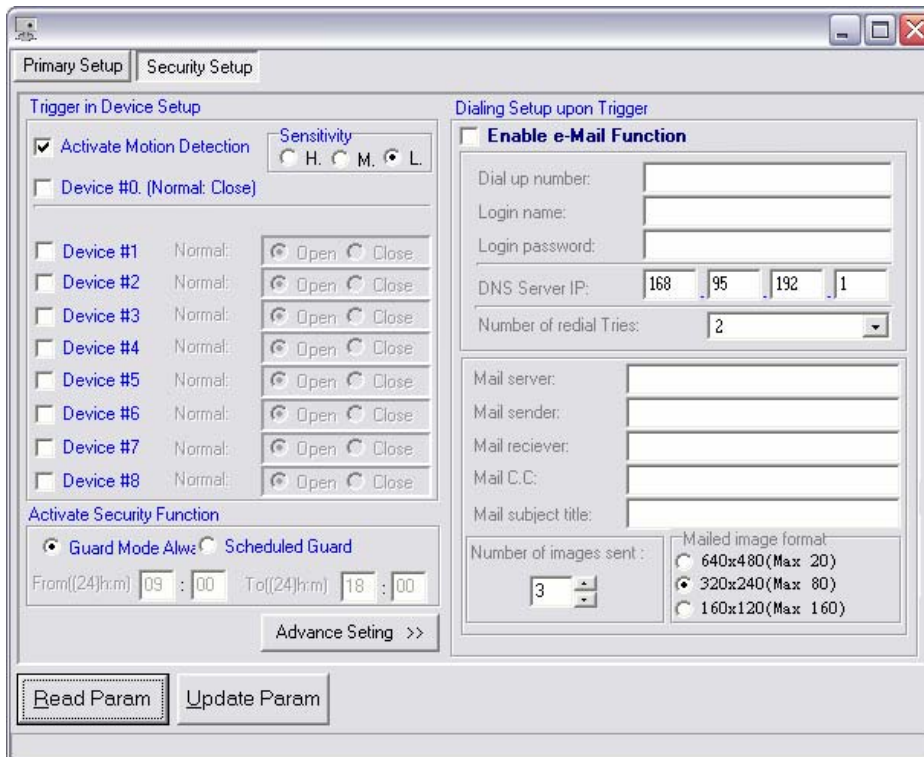
Adjust Sensor:

You will be able to adjust your image settings, such as contrast, brightness etc. Please move the scroll bar to optimize your image. The default is set to auto



CAMit II+

5.2.4.2 Security Setup



The security setup will allow you to setup the motion detection, trigger in and out devices.

Motion Detection

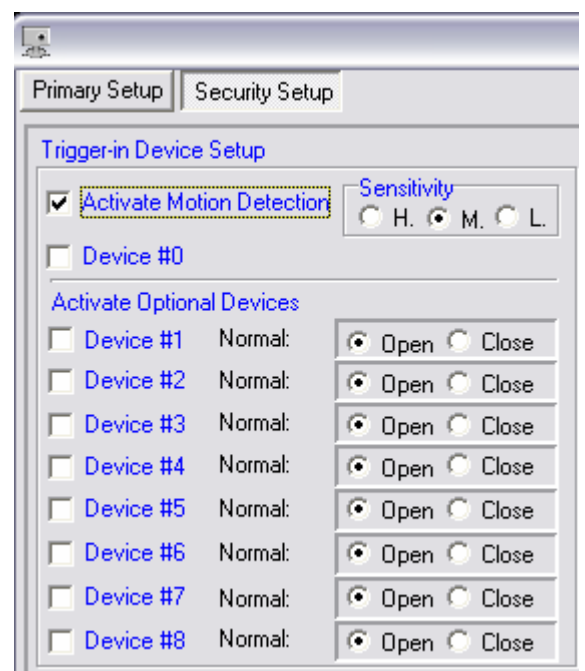
The Motion Detection function is a very valued function of the camera. It allows users to use the camera for security purposes, as the function will send image files to a pre-set computer upon motion detection. The files will also automatically be recorded to the hard drive of the computer for future reference.

To enable the motion detection, please check the box.

Sensibility: You will be able to choose 3 different sensibilities for your Motion Detection, simple choose High, Med, or Low according to your need.

Trigger In

Please check the box to enable Trigger In function. Please note that Device #0 is the default that is connected to the RJ22 power supply. Device #1 - #8 is the optional external device which you can purchase from your local dealers. To enable the optional device, please check the number according to the numbering.



CAMit II+

The Following Functions will only be available when Motion Detection or Trigger In is enabled.

Activate Security Mode

You will be able to choose between 2 types of activating your security mode; **Always** and **Daily**.

Guard Mode Always:

If you chose this option, the camera will always be on security mode when you have enabled either Motion Detection or Trigger In.

Scheduled Guard Mode:

If Scheduled Guard Mode was chosen, the camera will only start its security mode including Motion Detection or Trigger In at the time given. The camera will rely on the internal real time clock for its time reference. To setup the activation time for security, please insert the time at the space provided.

Image Captured

This is where you can set the images to be captured after the camera has been triggered and detects unusual intrusion. Please insert the number of image to be captured at the space provided.

Image Size

You will also be able to select different image size to be captured. Please select between 640x480, 320x240, 160x96.

E-mail Functions

Your camera will do an email sending procedure once it has been triggered. This way, you will be able to grasp the image during the incident which the triggering is occurred. Please click to enable the e-mail function.

Dial up number:

Please insert the number of the ISP for your CAMit II+ to dial when triggered.

Login Name:

Please enter the login name for your account to log into the ISP.

Login Password:

Please insert the password for your account to log into the ISP.

CAMit II+

Number of Tries:

Please set the number of tries for your CAMit II+ to dial to your ISP and try to establish connection.

Mail Server:

Please enter the mail server for your ISP. For example, mail.3jtech.com.tw

Mail Sender:

Please enter the sender (sender's e-mail address). For example info@3jtech.com.tw

Mail Receiver:

Please enter the destination e-mail address here.

Mail C.C:

Please enter a copy for this e-mail when a copy is required to send to other personnel.

Mail Subject Title:

Please enter the title for the e-mail.

Note. Please be aware that some of the ISP may not accept the mail from a different domain or IP region. Therefore you might have to ask your ISP before you setup the e-mailing function.

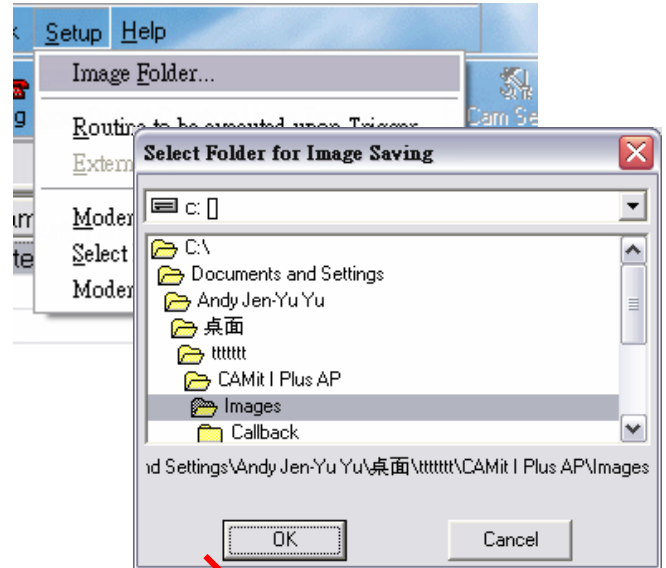
CAMit II+

5.2.5 Recording Image

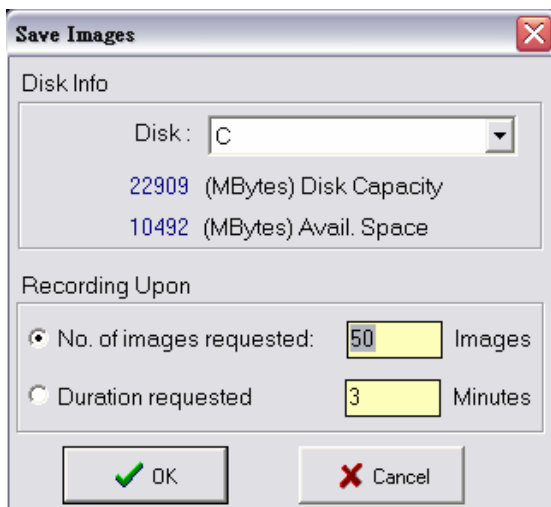
5.2.5.1 Setup Recording Directory

You will be able to set your own directory for the recorded images. The default recording directory is under the image folder of CAMit II+. To change a recording folder, please select from File menu **Setup** → **Image Folder**.

A sub menu will show up, please select the new directory and click **OK** when done.



5.2.5.2 Recording



You will be able to



record the images for future reference. To do so, while you're browsing, click on the **recording** button on top of the window.

A submenu will appear when selected. Simply enter the number of pictures you wish to record, or the time to be record. When you have entered the information, click **OK** and the program will start recording until the number of frames or time reached.

Snap Shot

Other than recording chains of images, you will also be able to capture a single image. To do so, simply press the **Snap Shot** button, and the current image will be saved into JPEG format for future reference.



5.2.5.3 Call Back Recording

When you have set the camera to do call back when triggered, the system will be able to record these call back images for your reference in future.

CAMit II+

Please have your computer turn on and the CAMit II+ AP running in order to the camera to communicate with your computer. Once the camera call back established the connection, the recording will begin. The number of picture recorded will be according to the number of frames you set at the camera setup.

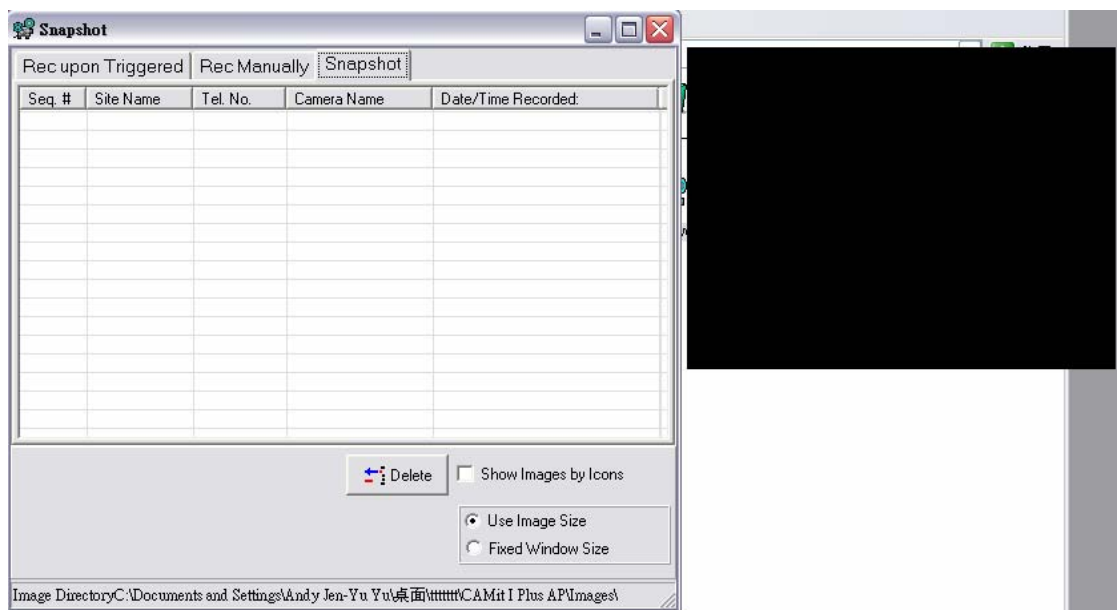
5.2.6 Play Recorded Images

To play the recorded image, please use Image Player provided, or clicks on the **Play** button to load the play software.



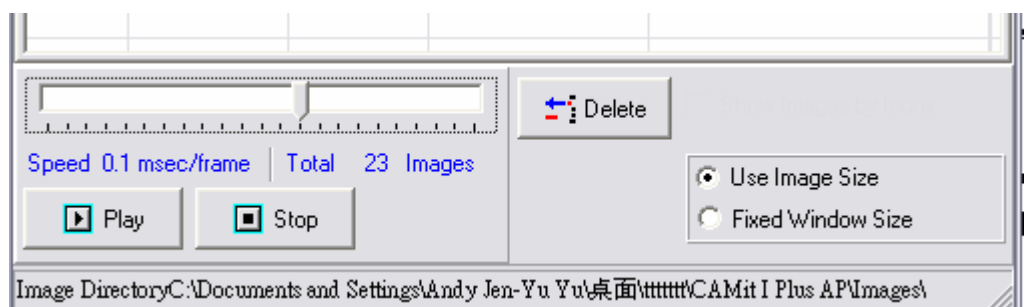
The Image Player is a separate program which will automatically divide the recorded files into different categories. **Rec Manually, Rec upon Triggered, and Snapshot.**

The images will be placed under the list for each of the group for simple sorting. This way, you will save time and no need to go through whole list just to find 1 recorded images. To switch the categories,



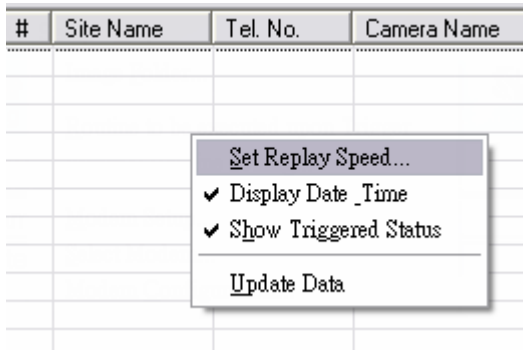
simply click on the category you wish to list and the system will sort out off the files for you.

To play the image, please first select the image, and press the **play** button at the bottom or you can simply double click the image file to play.



To stop the image playing at anytime, simply press **stop**.

CAMit II+



You will also be able to decide the playing speed of the image. Please right click on the image list and select **Set Playing Speed**. When the menu loaded, please enter the speed for each frame per millisecond.

You will be able to decide whether to display the image information such as **Time**, and the **Triggered Device**. To enable or disable the display of these information, please right click on the list, and select/deselect accordingly.

You will be able to set the played images in a fixed size instead of changing sizes according to the image. Please select whether you like the images to be play in 1 fixed size or original size by choose **Fixed Image Size** or **Original Image Size**.

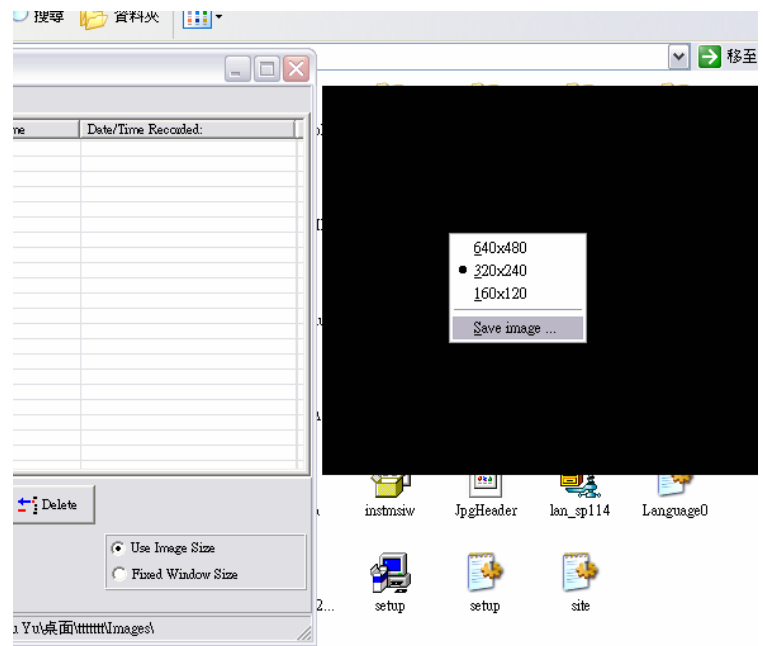
5.2.6.1 Delete Recorded Images

To delete a recorded image, simply select and highlight the images that you wish to delete, and press the **Delete** button. After your confirmation of deletion, the file will be removed immediately.



5.2.6.2 Save Images into JPG files

You will be able to extract individual frames from the images recorded into .JPG file so that the image maybe used as other reference. To do so, please pause on the frame you wish to extract, and right click your mouse on the image for menu to load. Select **Save image...** and choose the destination folder to place the file.



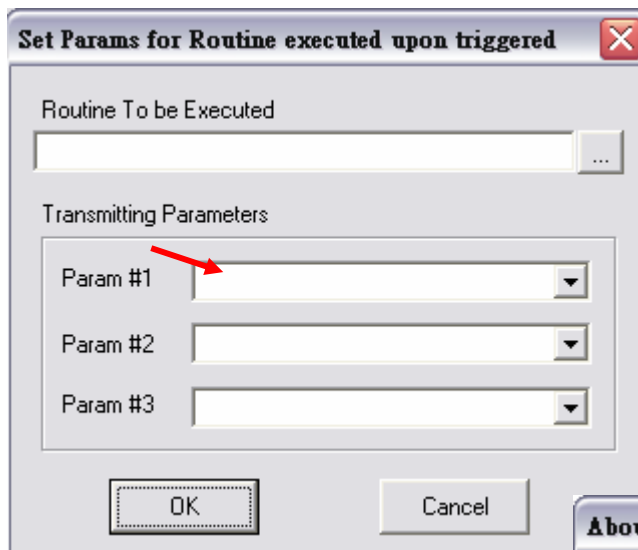
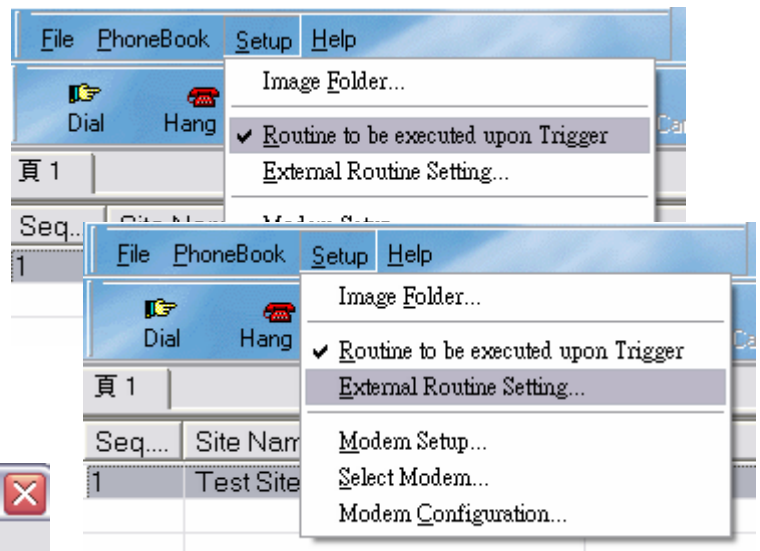
CAMit II+

5.2.7 Modem Configurations

You will be able to configure your modem via the software. To enter the modem configuration page please select from File menu **Setup** → **Modem Configuration**. Due to each individual brand of modem are different. Please refer to your modem instruction manual for detailed configuration.

5.2.8 External Routine

When the camera is triggered and call back to alert the computer, you will be able to set other software to execute when call back is detected. This can be used to integrate the camera together with your system. To enable external routine, please check **Routine to be executed upon Trigger** from Setup.



When checked, please select **External Routine Setting**. The menu should load once selected.

Please select the .exe file to be executed when detected a call back. You can choose up to 3 parameters to be send to the execution program.

5.2.9 Help

Under the **About** of Help menu, you will be able to know what version of the software you're using currently. You can always download the newer version from our web-site at <http://www.3jtech.com.tw>.



CAMit II+

6. Frequently Asked Questions:

Can I view the same site from different locations?

Yes, as long as you have the CAMit II+ AP software installed on that particular computer for which you wish to view from.

Can I view same site simultaneously from 2 locations?

No, due to regular phone line only supports point to point, only one user is allowed to establish connection with camera at one time.

Why won't my modem in the camera recognize the dial tone?

Different countries use different dial tones and frequencies. You will need to connect the camera to a PC with the DB9 connector cable for setup to set the country code using the CAMit II+ Setup program. After you are done setting the country code, you need to power off then on the camera for settings to be active.

Why won't my external trigger input work?

Once the camera is triggered externally, the camera will only reset after the trigger stage is restored. This means that the camera will only trigger once upon each activation. For example the contact sensor has to return to close stage and then re-open in order for it to be triggered again.

What should I do if I forget my password?

Please connect your camera with a computer using the serial cable included in the package and run the Setup program to change the password settings.

CAMit II+

7. Specifications

- Power consumption: 5V DC, 300mA
- Interfaces:
 - DB9C at auto-detect baud rate, 8, n, 1 for parameters setup
 - RJ11 for phone line
 - RJ22 connector for 5V DC/90~240V AC adaptor and trigger in/out
- Trigger in: Normal close to open or Low to High TTL level
- Motion detection sensitivity: High, Medium, and Low
 - Trigger out: Low to High TTL Level
 - Transmission Speed:
 - High Resolution (640x480): maximum 1.6 frames/second
 - Medium Resolution (320x240): maximum 3 frames/second
 - Low Resolution (160x120): maximum 5 frames/second
- Camera Specification:
 - CMOS Camera support Specification:
 - 101,376 pixels, 1/4" lens, CIF format
 - 352(H) x 288(V)
 - CAMit II+ use Specification:
 - 300K pixels, 1/3 lens @ at 120 degree angle, others are optional.
 - 352(H) x 288(V)
 - S/N Ratio: > 48dB
 - Gamma Correction: 0.45
 - Lens (optional lens available upon request)

	Standard lens:
Min. Illumination:	<5 lux@f2.0
Focal Length	3.6mm
Back Focal Length	5.96mm
Aperture F	2
Angle of View (DIA)	118
- Operation Environment:
 - Temperature: 0 °C ~ 55 °C
 - Humidity: 85% relative at 25 °C
- Weight: 150g
- Dimension of Main Body: 10cm x 6.5cm x 5 cm